



FR 370 VG



FR 378 VGC



FR 370 VS

CONGELATORI VERTICALI • UPRIGHT FREEZERS

INFORMAZIONI TECNICHE / TECHNICAL INFORMATION

		FR 378 VGC	FR 370 VGC	FR 370 VG	FR 370 VS
Classe/Class		4	4	4	4
Raggio di temperatura/Temperature range	°C	-12/-24	-13/-22	-13/-22	-14/-24
Voltaggio/Voltage	V	230	230	230	230
Frequenza/Frequency	Hz	50	50	50	50
Consumo Energia/Energy consumption	Kwh/24h	15.28	9.43	9.43	5.36
Volume netto/Net volume	Lt.	270	270	270	270
Volume lordo/Gross volume	Lt.	386	300	300	300
Larghezza esterna/esterna con imballo/Width ext./ext. with packing	mm	645/710	595/680	595/680	595/680
Profondità esterna/esterna con imballo/Depth ext./ext. with packing	mm	705/800	640/710	640/710	640/710
Altezza esterna/esterna con imballo/Height ext./ext. with packing	mm	1950/1990	1980/2080	1840/1940	1840/1940
Peso netto/Net weight	Kg	134	87	84	80
Peso lordo/Gross weight	Kg	139	92.5	89.5	85.5
Refrigerante/Refrigerant		R404A	R404A	R404A	R404A
Ripiani/Shelves		5	6	6	6
Container 20'/20' container capacity	Unit	23	24	24	24
Container 40'/40' container capacity	Unit	47	51	51	51
Container 40' HQ/40' HQ container capacity	Unit	47	51	51	51
83m³ autotreno/truck capacity	Unit	57	60	60	60

MAPET freddo ad arts



FR 100 PFF NS



FR 200 PFF NS



FR 300 PFF NS



FR 400 PFF NS



FR 500 PFF NS

CONGELATORI VETRO PIATTO FISSO • FREEZERS SEE-THRU L

INFORMAZIONI TECNICHE / TECHNICAL INFORMATION

	FR 100 PFF NS	FR 200 PFF NS	FR 300 PFF NS	FR 400 PFF NS	FR 500 PFF NS
Classe/Class	4+	4+	4+	4+	4+
Raggio di temperatura/Temperature range	°C -16/-24	-16/-24	-16/-24	-16/-24	-16/-24
Voltaggio/Voltage	V 230	230	230	230	230
Frequenza/Frequency	Hz 50	50	50	50	50
Consumo Energia/Energy consumption	Kwh/24h 2.04	3.05	3.30	4.90	6.40
Volume netto/Net volume	Lt. 91	165	255	350	436
Volume lordo/Gross volume	Lt. 108	191	296	401	491
Larghezza esterna/esterna con imballo/Width ext./ext. with packing	mm 565/680	720/810	1010/1100	1300/1400	1550/1640
Profondità esterna/esterna con imballo/Depth ext./ext. with packing	mm 610/700	715/750	715/750	715/750	715/750
Altezza esterna/esterna con imballo/Height ext./ext. with packing	mm 855/950	835/950	835/950	835/950	835/950
Peso netto/Net weight	Kg 38.5	51	58	69	77.5
Peso lordo/Gross weight	Kg 42	56	65	77	85.5
Refrigerante/Refrigerant	R134a	R134a	R134a	R404A	R404A
Cesti/Baskets	1	1	1	2	2
Rotelle/ Wheels (OD 70 mm.)	Opt.	Opt.	Opt.	Opt.	Opt.
Container 20'/20' container capacity	Unit 48	42	30	24	20
Container 40'/40' container capacity	Unit 102	92	64	50	42
Container 40' HQ/40' HQ container capacity	Unit 171	141	102	81	66
83m ³ autotreno/ truck capacity	Unit 120	108	72	56	48

MAPET freddo ad arts



FR 100 PAC



FR 200 PAC



FR 300 PAC



FR 400 PAC



FR 200 AC7



FR 500 PAC



INFORMAZIONI TECNICHE / TECHNICAL INFORMATION

	FR 100 PAC	FR 200 PAC	FR 300 PAC	FR 400 PAC	FR 500 PAC	FR 200 PAC 7
Classe/Class	4+	4+	4+	4+	4+	4+
Raggio di temperatura/Temperature range	°C -14/-24	-14/-24	-14/-24	-14/-24	-14/-24	-14/-24
Voltaggio/Voltage	V 230	230	230	230	230	230
Frequenza/Frequency	Hz 50	50	50	50	50	50
Consumo Energetico/Energy consumption	Kwh/24h 2.14	3.20	3.47	5.14	7.25	4.97
Volume netto/Net volume	Lt. 85	157	238	325	398	257
Volume lordo/Gross volume	Lt. 100	176	264	352	427	347
Larghezza esterna/esterna con imballo/Width ext./ext. with packing	mm 570/635	720/750	1010/1100	1300/1400	1550/1640	1327/1345
Profondità esterna/esterna con imballo/Depth ext./ext. with packing	mm 570/665	615/740	615/740	615/740	615/740	516/535
Altezza esterna/esterna con imballo/Height ext./ext. with packing	mm (897/760)/940	(945/835)/975	(945/835)/975	(945/835)/975	(945/835)/975	1085/1050
Peso netto/Net weight	Kg 37	49	57	66	72	82
Peso lordo/Gross weight	Kg 40	54	64	74	80	94
Refrigerante/Refrigerant	R134a	R134a	R134a	R404A	R404A	R404A
Cesti/Baskets	PCS. Opt.	Opt.	Opt.	Opt.	Opt.	7
Rotelle/Wheels (OD 70 mm.)	4	4	4	4	4	4 (2 con freno/with brake)
Container 20"/20" container capacity	Unit 54	42	30	24	20	32
Container 40"/40" container capacity	Unit 108	96	64	50	42	64
Container 40" HQ/40" HQ container capacity					66	64
83m³ autotreno/truck capacity					48	80

MAPET freddo ad arts



FR 100 PFF



FR 200 PFF



FR 300 PFF



FR 400 PFF



FR 500 PFF



FR 600 PFF

CONGELATORI VETRO PIATTO-CHEST FREEZERS SLIDING GLASS LID

INFORMAZIONI TECNICHE / TECHNICAL INFORMATION

	FR 100 PFF	FR 200 PFF	FR 300 PFF	FR 400 PFF	FR 500 PFF	FR 600 PFF
Classe/Class	4+	4+	4+	4+	4+	4+
Raggio di temperatura/Temperature range	°C -14/-24	-14/-24	-14/-24	-14/-24	-14/-24	-14/-24
Voltaggio/Voltage	V 230	230	230	230	230	230
Frequenza/Frequency	Hz 50	50	50	50	50	50
Consumo Energia/Energy consumption	Kwh/24h 2.04	3.05	3.30	4.90	6.40	7.15
Volume netto/Net volume	Lt. 91	165	255	350	430	620
Volume lordo/Gross volume	Lt. 108	191	296	401	491	670
Larghezza esterna/esterna con imballo/Width ext./ext. with packing	mm 570/635	720/750	890/1100	1300/1400	1550/1640	2055/2145
Profondità esterna/esterna con imballo/Depth ext./ext. with packing	mm 570/665	630/750	630/750	630/750	630/750	630/750
Altezza esterna/esterna con imballo/Height ext./ext. with packing	mm 897/950	890/940	890/940	890/940	890/940	890/940
Peso netto/Net weight	Kg 36.5	46.5	55.5	63.5	71.5	101
Peso lordo/Gross weight	Kg 40	52	62.5	71.5	79.5	107
Refrigerante/Refrigerant	R134a	R134a	R134a	R404A	R404A	R404A
Cesti/Baskets	Opt.	Opt.	Opt.	Opt.	Opt.	Opt.
Rotelle/Wheels (OD 70 mm.)	4	4	4	4	4	4
Container 20'/20' container capacity	Unit 54	42	30	24	20	16
Container 40'/40' container capacity	Unit 108	96	64	50	42	32
Container 40' HQ/40' HQ container capacity	Unit 171	141	102	81	66	50
83m³ autotreno/truck capacity				56	48	36

MAPET freddo ad arts



FRIGO A CESTO BEVANDE • CHEST COOLERS



CL 300 PFF



CL 100 PAF



CL 400 PS



CL 300 P2S

INFORMAZIONI TECNICHE / TECHNICAL INFORMATION

	CL 300 PFF	CL 100 PAF	CL 300 P2S	CL 400 PS
Classe/Class	4	4	4	4
Raggio di temperatura/Temperature range	°C 0/+10	0/+10	0/+10	0/+10
Voltaggio/Voltage	V 230	230	230	230
Frequenza/Frequency	Hz 50	50	50	50
Consumo energia/Energy consumption	kwh/24h 3.60	1.95	2.90	2.95
Volume netto/Net volume	Lt. 261	82	283	384
Volume lordo/Gross volume	Lt. 296	100	289	401
Larghezza esterna/esterna con imballo/Width ext./ext. with packing	mm 1010/1100	570/635	1050/1100	1300/1400
Profondità esterna/esterna con imballo/Depth ext./ext. with packing	mm 630/750	570/665	670/750	715/750
Altezza esterna/esterna con imballo/Height ext./ext. with packing	mm 890/940	(897/760)/940	850/950	835/950
Peso netto/Net weight	Kg 53	37	57	71
Peso lordo/Gross weight	Kg 60	40	63	79
Refrigerante/Refrigerant	Gas R134a	R134a	R134a	R134a
Container 20"/20" container capacity	Unit 30	54	30	24
Container 40"/40" container capacity	Unit 64	108	64	50
Container 40" HQ/40" HQ container capacity	Unit 102	171	99	81
83m³ autotreno/truck capacity			72	56

MAPET freddo ad arts



CONGELATORI PORTA CHIUSA • CHEST FREEZERS



FR 100 PS



FR 200 PS



FR 300 PS



FR 400 PS



FR 500 PS



FR 600 PS

INFORMAZIONI TECNICHE / TECHNICAL INFORMATION

		FR 100 PS	FR 200 PS	FR 300 PS	FR 400 PS	FR 500 PS	FR 600 PS
Classe/Class		T	T	T	T	T	T
Raggio di temperatura/Temperature range	°C	-15/-25	-15/-25	-15/-25	-15/-25	-15/-25	-15/-25
Voltaggio/Voltage	V	230	230	230	230	230	230
Frequenza/Frequency	Hz	50	50	50	50	50	50
Consumo Energia/Energy consumption	Kwh/24h	1.1	1.90	2.30	2.95	3.45	4.50
Volume netto/Net volume	Lt.	104	182	283	384	471	646
Volume lordo/Gross volume	Lt.	108	191	296	401	492	675
Capacità di refrigerazione/Freezing capacity	kg/24h	6	14	20	25	29	39
Larghezza esterna/esterna con imballo/Width ext./ext. with packing	mm	565/680	720/810	1010/1100	1300/1400	1550/1640	2055/2145
Profondità esterna/esterna con imballo/Depth ext./ext. with packing	mm	610/700	715/750	715/750	715/750	715/750	715/750
Altezza esterna/esterna con imballo/Height ext./ext. with packing	mm	855/950	835/950	835/950	835/950	835/950	835/950
Peso netto/Net weight	Kg	36.5	48.5	58	71	80.5	101
Peso lordo/Gross weight	Kg	40	53.5	65	79	88	107
Refrigerante/Refrigerant		R134a	R134a	R134a	R404A	R404A	R404A
Cesti/Baskets		Opt.	Opt.	Opt.	Opt.	Opt.	Opt.
Rotelle/Wheels (OD 50 mm.)	Unit	Opt.	Opt.	Opt.	Opt.	Opt.	Opt.
Container 20"/20" container capacity	Unit	48	42	30	24	20	16
Container 40"/40" container capacity	Unit	102	92	64	50	42	32
Container 40" HQ/40" HQ container capacity	Unit	171	141	102	81	66	50
83+ autotreno/truck capacity					56	48	36

MAPET freddo ad arts



FR 100 PFC



FR 200 PFC



FR 300 PFC



FR 400 PFC



FR 500 PFC

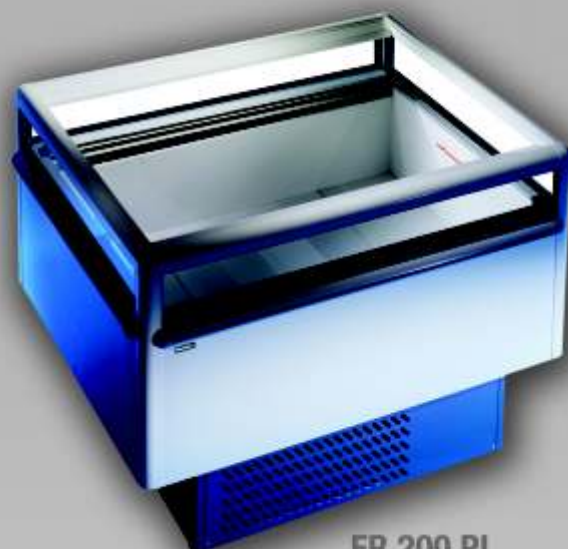


CONGELATORI VETRO CURVO • CHEST FREEZERS SLIDING GLASS LIDS

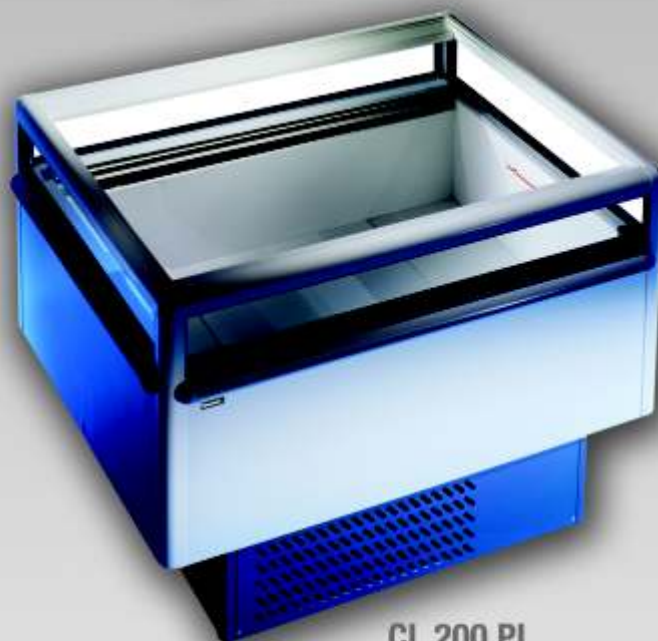
INFORMAZIONI TECNICHE / TECHNICAL INFORMATION

	FR 100 PFC	FR 200 PFC	FR 300 PFC	FR 400 PFC	FR 500 PFC
Classe/Class	4+	4+	4+	4+	4+
Raggio di temperatura/Temperature range	°C -14/-24	-14/-24	-14/-24	-14/-24	-14/-24
Voltaggio/Voltage	V 230	230	230	230	230
Frequenza/Frequency	Hz 50	50	50	50	50
Consumo Energetico/Energy consumption	Kwh/24h 2.04	3.05	3.30	4.90	6.40
Volume netto/Net volume	Lt. 91	165	255	350	430
Volume lordo/Gross volume	Lt. 108	191	296	401	491
Larghezza esterna/esterna con imballo/Width ext./ext. with packing	mm 570/635	720/750	1010/1100	1300/1400	1550/1640
Profondità esterna/esterna con imballo/Depth ext./ext. with packing	mm 570/665	630/750	630/750	630/750	630/750
Altezza esterna/esterna con imballo/Height ext./ext. with packing	mm 897/950	890/940	890/940	890/940	890/940
Peso netto/Net weight	Kg 36.5	46.5	55.5	63.5	71.5
Peso lordo/Gross weight	Kg 40	52	62.5	71.5	79.5
Refrigerante/Refrigerant	R134a	R134a	R134a	R404A	R404A
Cesti/Baskets	Opt.	Opt.	Opt.	Opt.	Opt.
Rotelle/Wheels (OD 70 mm.)	4	4	4	4	4
Container 20"/20" container capacity	Unit 54	42	30	24	20
Container 40"/40" container capacity	Unit 108	96	64	50	42
Container 40" HQ/40" HQ container capacity				81	66
63m' autotreno/truck capacity				56	48

MAPET freddo ad arts



FR 200 PI



CL 200 PI

ISOLA BEVANDE O CONGELATI • SHOW CASE ICE CREAM AND BEVERAGE

INFORMAZIONI TECNICHE / TECHNICAL INFORMATION

		FR 200 PI	CL 200 PI
Classe/Class		03L1	03L1
Raggio di temperatura/Temperature range	°C	-12/-24	0/+10
Voltaggio/Voltage	V	230	230
Frequenza /Frequency	Hz	50	50
Volume netto/Net volume	Lt.	165	165
Volume lordo/Gross volume	Lt.	200	200
Area display/ Display area	m2	0.85	0.85
Larghezza esterna/esterna con imballo/Width ext./ext. with packing	mm	1010/1040	1010/1040
Profondità esterna/esterna con imballo/Depth ext./ext. with packing	mm	1260/1280	1260/1280
Altezza esterna/esterna con imballo/Height ext./ext. with packing	mm	900/1030	900/1030
Peso netto/Net weight	Kg	132	132
Peso lordo/Gross weight	Kg	142	142
Refrigerante/Refrigerant		R404A	R404A
Container 20'/20' container capacity	Unit	8	8
Container 40'/40' container capacity	Unit	18	18
Container 40' HQ/40' HQ container capacity	Unit	20	20
83m² autotreno/truck capacity	Unit	20	20

MAPET freddo ad arts